



Construction Update

Site-clearing and bulk excavation works are continuing on the new main hospital building site.

Demolition works to the main entry awning and installation of a façade protection wall has recently been completed.

Retention wall piling has commenced with a capping beam to be added prior to further bulk excavation - digging down to lower levels.



Have you seen our new display in the container walkway between Emergency and the Main Entrance?





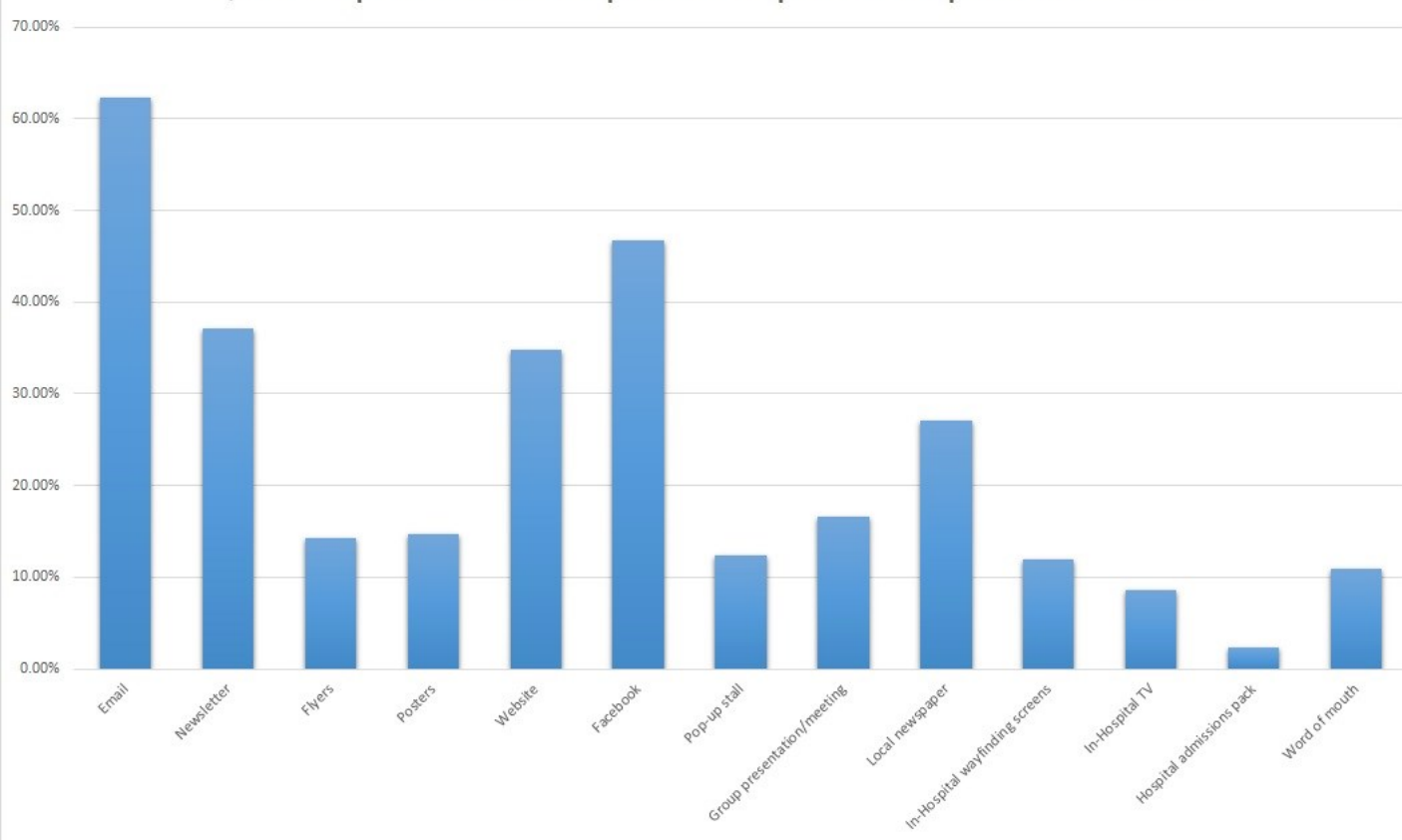
Find us on:
facebook®

Stay up to date with all the latest redevelopment news:

www.facebook.com/CampbelltownHospital

Survey Results

Q4. I would prefer to receive Campbelltown Hospital Redevelopment information via



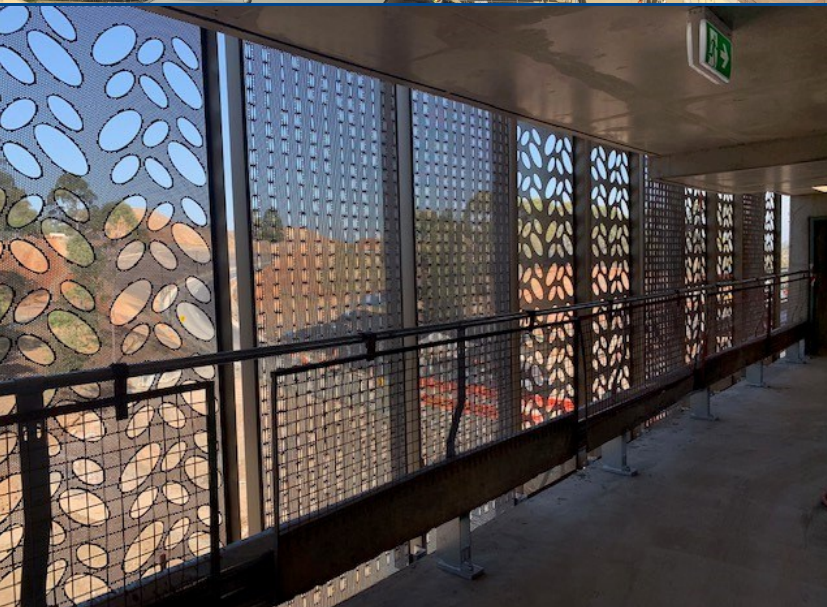
Thank you to everyone who completed the recent Redevelopment Communications Survey.

In total we had over 200 responses and the results are helping us to plan our communication strategies and ensure all who need to receive our updates are doing so via their preferred channels.

The graph above shows that you prefer to find out about the hospital redevelopment via email, Facebook, newsletters, our website and local newspapers - so we will continue to use these channels throughout the project.

Are you a member of a community or social group that might be interested in finding out more about the Campbelltown Hospital Redevelopment? If so, please email us to request a presentation.



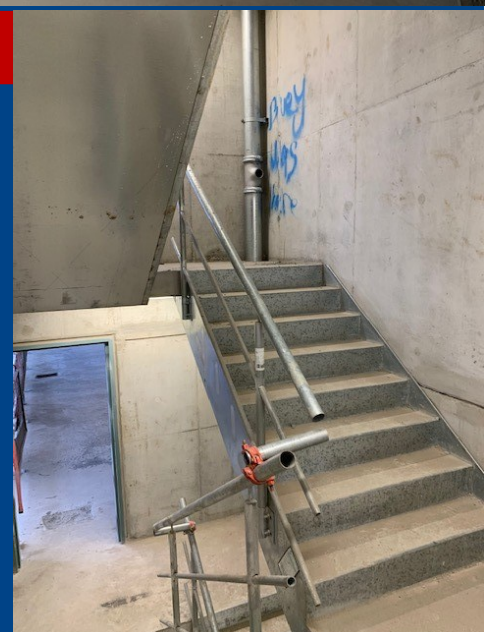


Carpark Update

Construction of the multi-storey carpark is on track with fine weather on our side.

Installation of lifts, stairwells and lighting has begun and the lower end of the carpark is fast catching up in height with new levels being poured every week.

Scaffolding will be removed in sections to reveal the decorative cladding finish.





Please be aware that construction trucks will still be travelling on this road in both directions.

This arrangement will remain in place for approximately two months. See map for details.