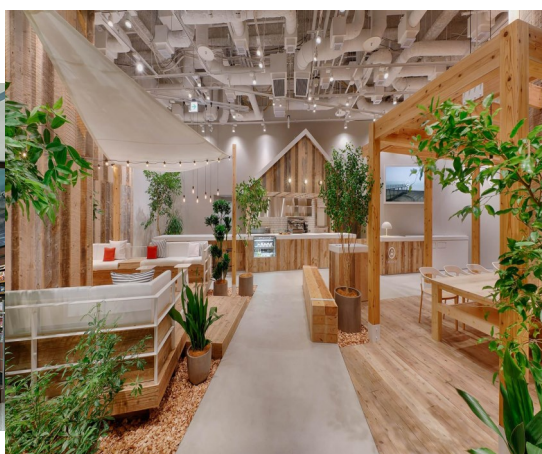


The NSW Government's \$632 million **Campbelltown Hospital Redevelopment** will ensure our health services continue to meet the growing population and needs of the Macarthur community incorporating the Campbelltown, Camden and Wollondilly Local Government Area's.

The Schematic Design is in the final stages and will outline where the floor plates, departments and wards will be located in the new building. The next stage of the redevelopment will be the design phase which includes making decisions on interior and exterior building materials and finishes, furniture and equipment, and lighting, electrical and plumbing systems.

This month a number of community engagement activities are available for staff and the general community to provide feedback on the future plans of the hospital.



Shops, services and more!

We would like to know what types of shops, services and functional features you would like to see as part of the Hospital redevelopment. Your input and ideas will help us shape the future of the hospital.

Visit <https://www.surveymonkey.com/r/3CPJ6PP>



Enhanced Paediatric Services

More children will be treated closer to home with Campbelltown Hospital's new paediatric centre adding a greater range of surgical, medical and outpatient services. Paediatric beds will almost triple from 22 to 60 as part of the NSW Government's \$632 million Stage 2 redevelopment, one of the largest health infrastructure projects in the state.

This is the start of an exciting, new era in children's health care for the Macarthur region centred on our flagship local hospital and both staff and patients will benefit for decades to come.

The redeveloped paediatric precinct will include:

- Close observation beds will be provided for more seriously ill children.
- Nuclear medicine will be available so children no longer need to visit other hospitals for PET scans and appointments.
- Children suffering seizures or bone infections will receive care locally as bone and brain scans will be available at Campbelltown Hospital, meaning families will no longer need to travel to other hospitals.
- Transition Care Services will ensure seamless care for children who are moving into adult-based care for lifelong medical conditions.
- A brand new rehabilitation outpatient clinic with specialised therapy teams to treat children with disabilities such as cerebral palsy and developmental conditions.
- New dental services to treat children with complex dental conditions and infections.
- New facilities such as 12 new consulting rooms, eight assessment rooms and a new allied health gymnasium and playroom.

Help shape the future of the hospital by providing feedback and input about the redevelopment. There are lots of opportunities to get involved.



Have your say about the new paediatric service

Come along to find out more and see the future plans for the new paediatric service.

This is your opportunity to ask questions and receive the latest information about the redevelopment.

Hospital drop-in information stall

6 September 2018 - 11.00am to 2.00pm
Campbelltown Hospital - Fresh Cafe

Consumer focus groups

Register now to attend a focus group and share your ideas about the new paediatric service.

5 September 2018 - 2:30pm to 4.00pm
6 September 2018 - 2.00pm to 3:30pm

Limited seats are available for the focus groups so don't delay, register by emailing SWSLHD-CampbelltownHospitalRedevelopment@health.nsw.gov.au



More parking spaces are on their way



Early works are progressing for the at ground level car park located near to Appin Road. We anticipate these works being completed by September/October 2018.

Once these works are completed, work on the new multi storey car park can commence. When complete, the new multi storey car park will increase capacity to over 700 car parking spaces. This will mean more car parking available across the campus for patients, visitors and staff.

We would like to thank you for your patience during this time and wish to remind everyone that the speed limit in hospital grounds is 10 kilometres per hour.



Over **180 planning & design** meetings have taken place so far by way of focus and user groups with over 500 people attending!

We would like to thank all staff and community representatives that have been involved in the project meetings to date.



Inspiration for the original design of Campbelltown Hospital came from the idea of a 'castle on the hill'. The hospital rose above the greenfield hillside as a visually imposing representation of the new civic area of Campbelltown!



Who is running the redevelopment project?

Health Infrastructure is a government agency responsible for managing the planning, design and delivery of health infrastructure capital works throughout NSW. The Campbelltown Hospital redevelopment project forms part of Health Infrastructure portfolio. Once completed, Campbelltown and Camden Hospitals will be operated by the South Western Sydney Local Health District.

When will the new clinical services building be built?

It is anticipated that the new clinical services building will be completed by late 2022

